



burrardPLACE

# LIMITLESS VIEWS





# SIXTY STOREYS IN THE SKY



# A GRAND SENSE OF ARRIVAL

*Iconic architecture  
Marbled porte cochere  
Double height lobby*

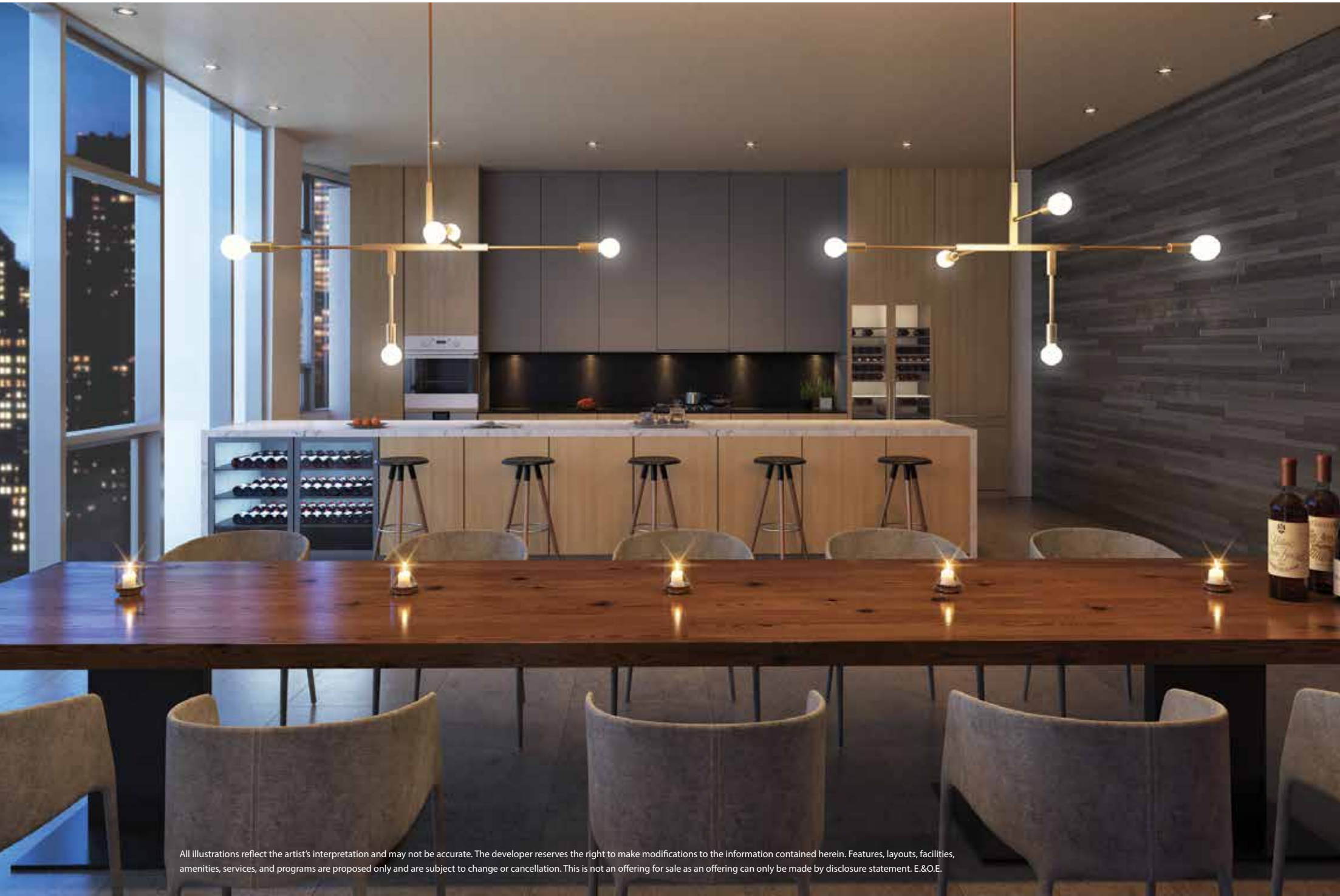




Let our anticipatory  
butler-concierge service –  
the first in Canada –  
fulfill your every  
wish and beyond.

# EXCLUSIVE PRIVATE DINING VENUES

*Temperature-controlled wine cellars and tasting lounge*  
*Private shopping salon*  
*Private fine dining venues*



# IN-HOUSE LUXURY SPA EXPERIENCE



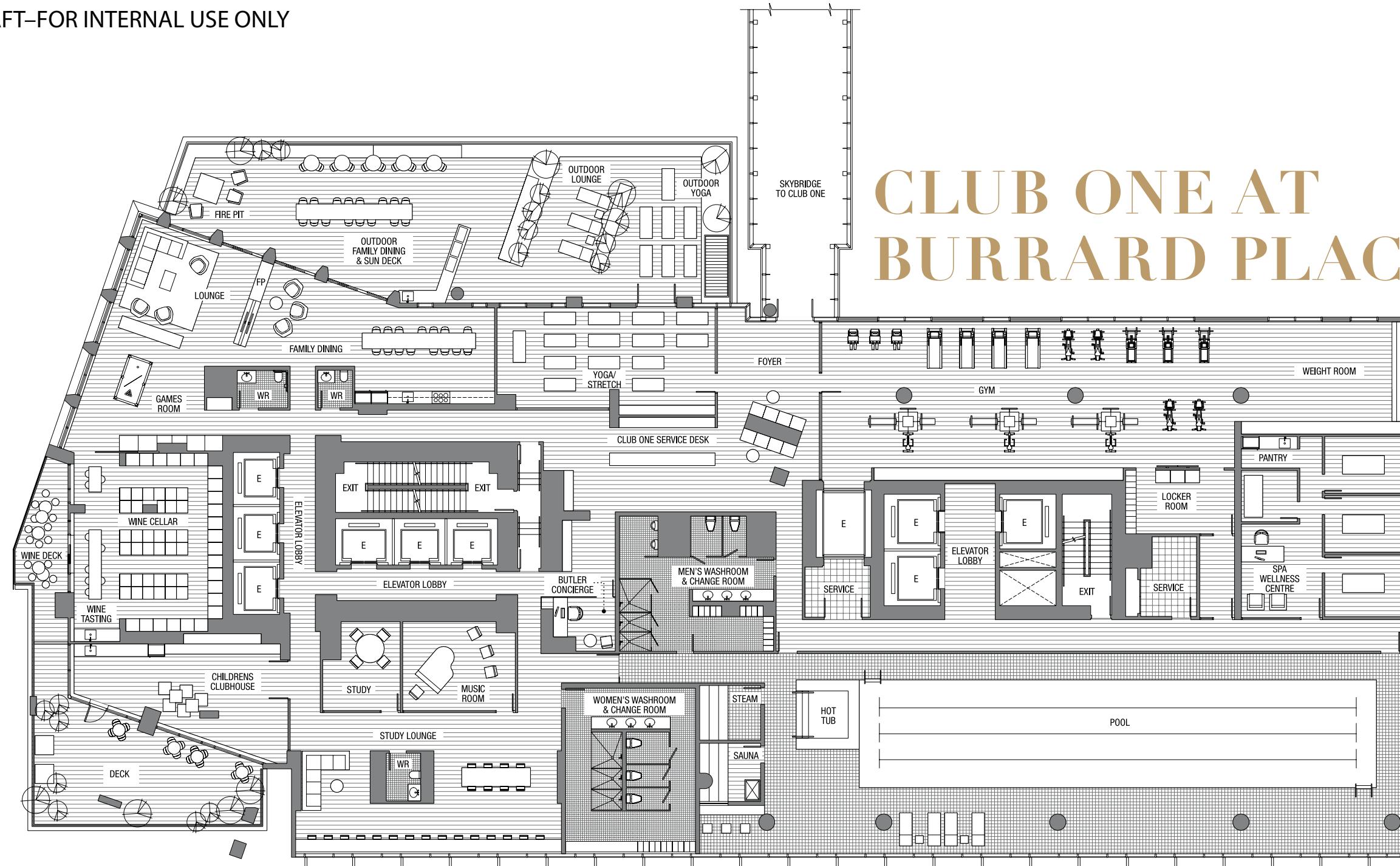
Full length pool with steam,  
sauna and hot tub.





Private health club with gym, indoor and outdoor yoga centres, spa and wellness centre, and more.

DRAFT-FOR INTERNAL USE ONLY



# CLUB ONE AT BURRARD PLACE

## PREVAILING SENSE OF LUXURY: 30,000 SQ FT PRIVATE CLUBHOUSE

- Fully equipped fitness facility with weight room, stretch area and men's & women's change rooms
- Full-time amenity butler concierge
- Indoor and outdoor large scale dining facilities
- Temperature-controlled wine cellars with wine tasting bars
- Children's clubhouse with playroom, workshop, party room, music room and study areas
- Indoor & outdoor yoga space
- Private spa with treatment rooms
- Full length lap pool
- Sauna, steam rooms, and hot tub

# MOST DESIRED LOCATION



burrard  
PLACE

PACIFIC OCEAN ○

STANLEY PARK ○

ENGLISH BAY ○

FINANCIAL DISTRICT ○

COUTURE SHOPPING DISTRICT ○

HOLT RENFREW ○

CANADA PLACE ○

SUNSET BEACH ○

AQUATIC CENTRE ○

LE CROCODILE ○

NORDSTROM ○

BALLENTYNE PIER ○

GASTOWN ○

KITSILANO BEACH ○

HR MACMILLAN SPACE CENTRE ○

BURRARD BRIDGE ○

VANCOUVER ART GALLERY ○

ORPHEUM ○

QUEEN ELIZABETH THEATRE ○

BC PLACE ○

MUSEUM OF VANCOUVER ○

VANCOUVER ACADEMY OF MUSIC ○

GIARDINO ○

GRANVILLE STREET ○

YALETOWN ○

BURRARD CIVIC MARINA ○

PUBLIC MARKET ○

FALSE CREEK YACHT CLUB ○

ROUNDHOUSE COMMUNITY CENTRE ○

DAVID LAM PARK ○

QUAYSIDE MARINA ○

GRANVILLE ISLAND ○

ARTS UMBRELLA ○

GRANVILLE ISLAND MARINA ○

FALSE CREEK ○

SPRUCE HARBOUR MARINA ○

HEATHER CIVIC MARINA ○







DRAFT-FOR INTERNAL USE ONLY



**01**  
2 Bedroom  
911 sq ft

**02**  
1 Bedroom  
464 sq ft

**03**  
Studio  
479 sq ft

**05**  
2 Bedroom  
815 sq ft

**12**  
2 Bedroom  
854 sq ft

**06**  
Studio  
440 sq ft

**07**  
1 Bedroom  
553 sq ft

**11**  
2 Bedroom  
948 sq ft

**08**  
2 Bedroom  
888 sq ft

**10**  
1 Bedroom  
570 sq ft

**09**  
Studio  
466 sq ft

**FLOORS**  
**LEVEL 15-31**

HORNBY STREET

DRAFT-FOR INTERNAL USE ONLY



**10**  
2 Bedroom  
1408 sq ft

**01**  
2 Bedroom  
779 sq ft

**02**  
2 Bedroom  
1080 sq ft

**09**  
1 Bedroom  
779 sq ft

**03**  
1 Bedroom  
557 sq ft

**08**  
2 Bedroom  
1329 sq ft

**05**  
2 Bedroom  
884 sq ft

**07**  
1 Bedroom  
570 sq ft

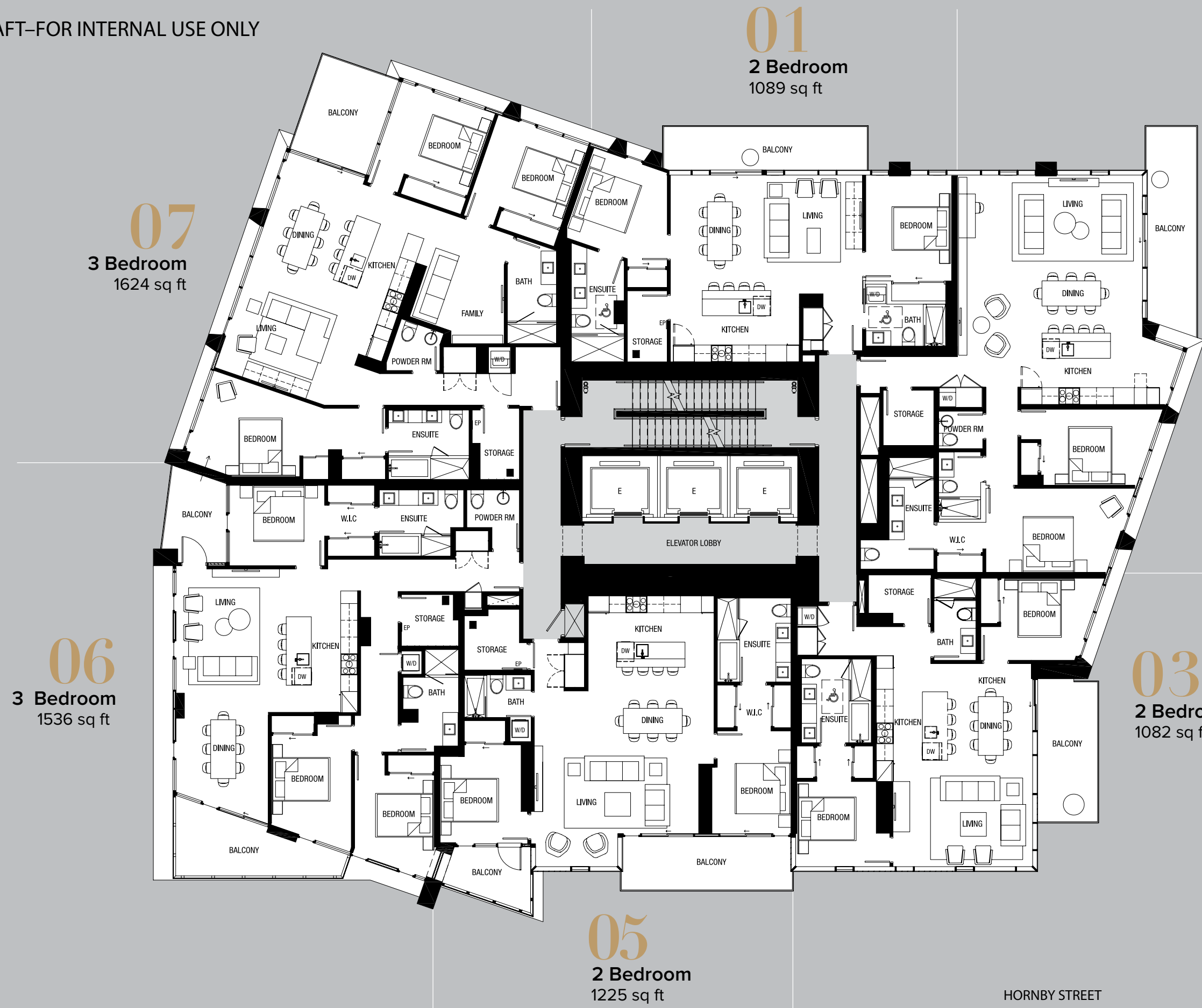
**06**  
Studio  
467 sq ft

HORNBY STREET

FLOORS  
LEVEL 35-46



DRAFT-FOR INTERNAL USE ONLY



**01**  
2 Bedroom  
1089 sq ft

**07**  
3 Bedroom  
1624 sq ft

**02**  
2 Bedroom  
1385 sq ft

**06**  
3 Bedroom  
1536 sq ft

**03**  
2 Bedroom  
1082 sq ft

**05**  
2 Bedroom  
1225 sq ft

**FLOORS**  
**LEVEL 47-56**

HORNBY STREET

# LIMITLESS LUXURY

## ARCHITECTURAL VISION

One Burrard Place, part of the development of the entire 1200 block of Hornby Street, is designed by world renowned IBI Group Architects.

Steps away from the stately Burrard Street Bridge, at 550' feet high, One Burrard Place will be the gateway to Downtown Vancouver as well as the third tallest building to grace Vancouver's skyline.

The architectural design maximizes the array of sun, sea, and view contexts, unique to our location. Principal rooms in every residence will enjoy spectacular city, sea and mountain views, considered by the discerning as the most breathtaking in the world.

One Burrard Place will meet LEED Gold Certification requirements.

On one of the last remaining tall building sites in Downtown Vancouver, One Burrard Place will join an elite group of Vancouver residential towers that can truly be called Skyscrapers.

## ULTRAMODERN INTERIORS

- 2 highly curated colour palettes for your selection: Natural and Grey
- Lofty 8'6" – 9' high ceilings
- Floor to ceiling glazed Curtain/Window Wall window system
- Wide plank hardwood flooring throughout (stone flooring in bathrooms)
- Central Air Conditioning
- Built-in closets with mirror doors and organizers in bedrooms
- Studio homes include Wall Bed with Dining Table and Side Pods for storage
- Motion Sensor lighting in closet, laundry and flex rooms
- Automated smart home controls for temperature, lighting and alarm systems and Butler Concierge - Club One Service
- Built-in Safe in every home
- Custom Roller blinds
- Bosch Washer and Dryer

## SUMPTUOUS BATHROOMS

- Italian designed wood veneer vanities and medicine cabinet
- Mirrors with integrated lighting
- Integrated vanity basin and countertop combination
- Smoked glass shower enclosure
- Duravit wall mount toilets
- Italian Zucchetti hand polished chrome bathroom faucets and shower bar. *zucchettikos.it*
- 36" x 12" marble wall and shower surround
- ¾" Marble stone slabs for tub deck and surround
- 36" x 12" stone flooring
- Nuheat heated floors

## SHOWCASE POWDER ROOM

- Stunning Italian Antonio Lupi signature Corian pedestal sink *antoniolupi.it*
- Italian Zucchetti wall mount faucet
- Dramatic stone slab wall with Bocci 28 Series pendant fixture (powder rooms are available in larger residences only)

## STAR CHEF KITCHEN

### EUROPEAN DESIGNED KITCHEN

- Sleek and ergonomic cabinets with wood veneer and lacquer combination
- Integral door handles
- Soft-touch self-close doors and drawers
- Integrated kitchen waste bins
- Under cabinet LED lighting with motion sensor lighting
- Largest kitchens come with pull-out pantry cabinets

## GAGGENAU APPLIANCES

Gaggenau, a brand chosen by the world's top 50 chefs in 2015, is exclusively selected for your culinary pleasure.

- Gas cook top
- Speed oven or oven
- Steam oven (available in larger residences)
- Integrated refrigerator
- Integrated dishwasher
- Refrigerated wine column (available in larger residences only)

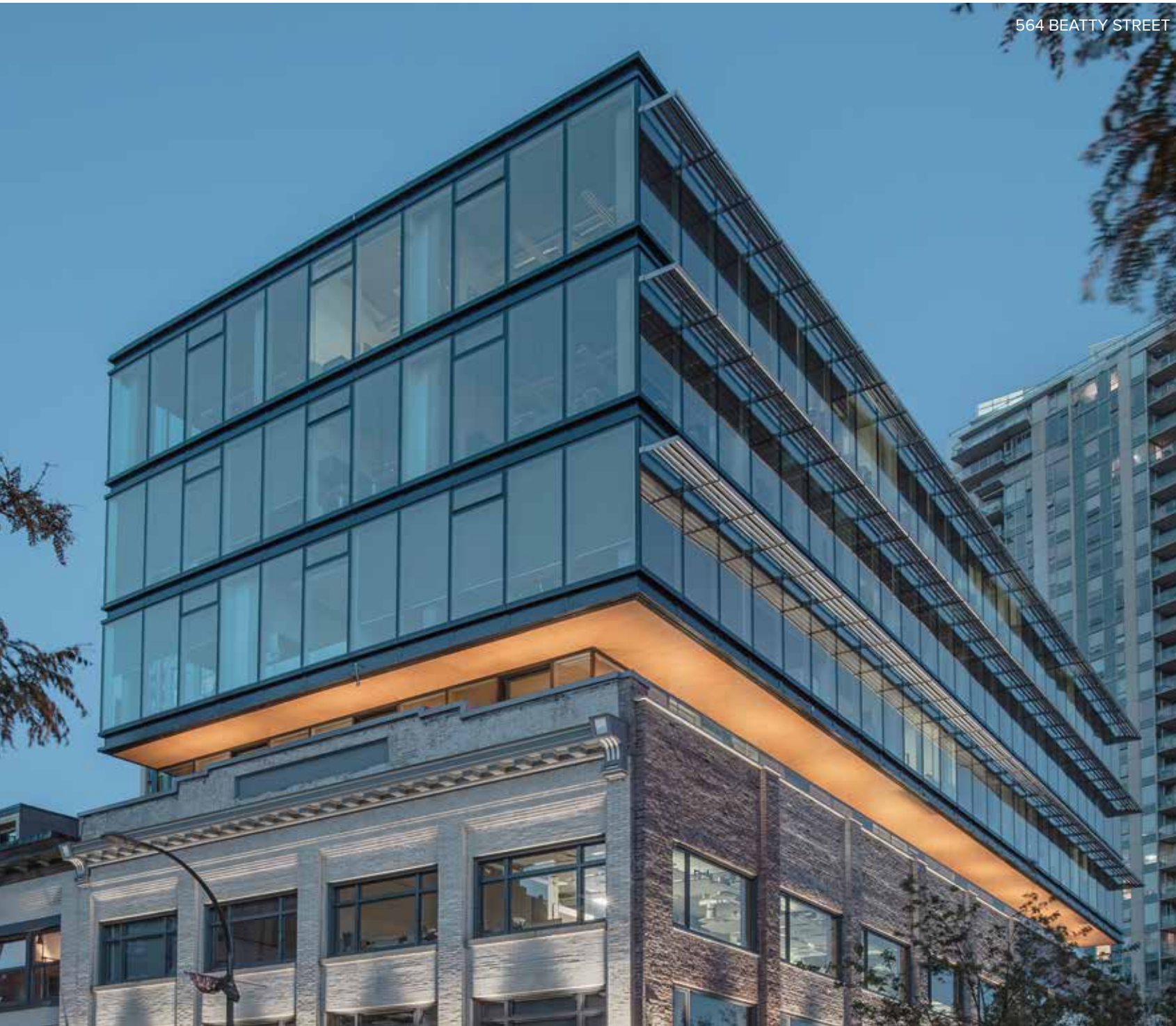
## ADDITIONAL FINISHES

- Integrated Panasonic microwave (available in larger residences)
- Integrated Italian hood fan
- Italian Zucchetti hand-polished chrome faucet with pull-out spray
- Caesar stone backsplash, kitchen and waterfall island countertop

## PEACE OF MIND

- 24/7 Butler Concierge service at Main Lobby and at Club One on the seventh floor
- Fully secured, camera-controlled underground parking garage
- Rough-in Alarm System
- Hard-wired smoke detectors
- Secure floor-by-floor fob controlled access
- Pre-wired for high-speed internet access and digital cable entertainment channels
- Free Telus Internet and Cable package for the first year
- New Home Warranty including:
  - » 2 year materials and labour warranty
  - » 5 year building envelope warranty
  - » 10 year structural warranty

# TEAM ABOVE ALL



564 BEATTY STREET



WEST PENDER PLACE



BURRARD PLACE

A family-owned company, for more than fifty years, Reliance Properties has been involved in the acquisition, leasing and management of commercial and residential real estate throughout Metro Vancouver.

Named the Most Innovative Company of 2013 by BC Business Magazine, Reliance Properties is recognized for the creation of exceptional urban office and residential developments that have been integral to neighbourhood redevelopment and revitalization. These efforts have resulted in numerous design and heritage awards both locally and provincially.



# TEAM ABOVE ALL



SAVE-ON-FOODS



SILVER WOOD TOWNHOMES



METRO TOYOTA

The Jim Pattison Group has had a significant presence in City of Vancouver and the Province of British Columbia for more than fifty years. Headquartered in Vancouver, The Jim Pattison Group is the second-largest private company in Canada, with annual sales of over \$8.4 billion and more than 39,000 employees in 545 locations worldwide.

The Jim Pattison Group operates in the automotive, agriculture, media, packaging, food and beverage, magazine distribution, entertainment, export, and financial industries.

The Jim Pattison Real Estate Group owns and manages a portfolio of over 12 million square feet of real estate throughout Canada and the United States. The Real Estate Group's core activities include development, construction, property management, and investment in a wide variety of commercial and residential real estate projects.

At Burrard Place, the experience and expertise gained from more than fifty years as an industry leader makes the Jim Pattison Group the ideal partner to create a development that will help shape the future of Vancouver and become a lasting legacy on the Downtown Vancouver skyline.

DEVELOPED BY: BURRARD PLACE RESIDENTIAL ALP



MARKETED BY



[www.burrardplace.ca](http://www.burrardplace.ca)